



invisidoor S

Invisidoor S – advantages

- Invisible sliding door flush with the wall
- Unique system, architectural highlight
- Residential application
- Fully removable door and accessories
- Auto eject, improved acoustics
- Rollers are height adjustable
- Modular reinforcement profiles
- Pocket closes automatically after the door comes out of the wall



Invisidoor S – video



Invisidoor S – specifications

- Max. door weight: 80kg
- Wall thickness: 125mm
- Door height:
2015 / 2040 / 2140mm
2115 / 2315mm
2600mm
- Door width: 830 / 930 / 1030mm
- Door thickness: 40mm



Optional:

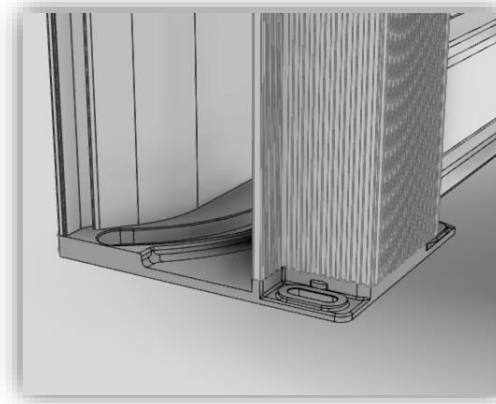
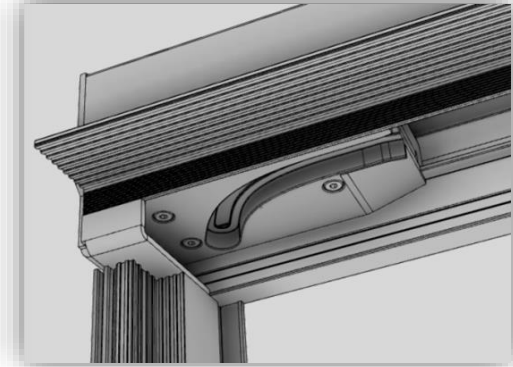
- AGB WC/Bathroom hook lock
- Height 1005mm

Colors:

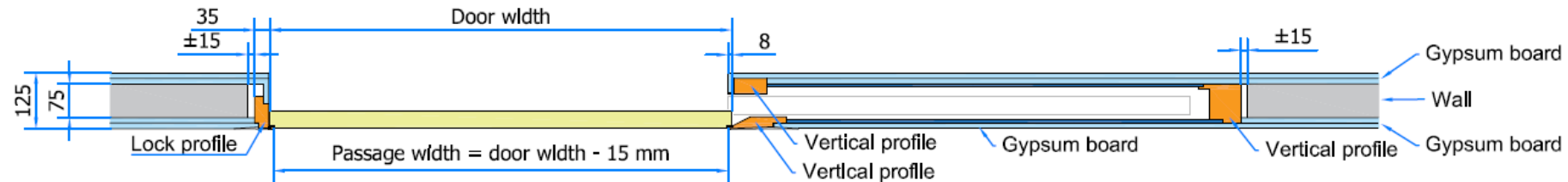
- Running profile: black anodised
- Vertical profiles: white primer
- Cover profile door: white primer



Invisidoor S – build-up



Invisidoor S – build-in dimensions



Height passage = Door height + 14mm

Width passage = Door width – 15mm

Clearance at the bottom:

- Front = 13mm
- Back = 7mm

Adjustment:

- 2mm upwards
- 3mm down